



CHANGING THE GAME



2013 ANNUAL REPORT

LETTER FROM LEADERSHIP

Dear Friends,

Journey House is celebrating 45 years of service. Since 1969, we have been changing the game for the residents of Milwaukee’s near Southside Clarke Square Neighborhood and the surrounding communities, moving families out of generational poverty using a self-help philosophy.

The organization started out with 4 full-time staff and an annual budget of \$45,000. Today, Journey House employs 21 full-time and 60 part-time staffers, operating on an annual budget of \$2 million.

Over the years some 80,000 participants have taken part in Journey House programs. Our offerings have shifted to meet the changing needs of the community, allowing us to grow and remain relevant throughout the decades.

We have brought energy and fresh ideas to the neighborhood through partnerships. Today, we enjoy community collaborations with over 70 businesses and organizations including the Wisconsin Technical College System, Milwaukee Area Technical College, Milwaukee Public Schools, Milwaukee County Parks, and Marquette University High School.

2013 brought the opening of the Journey House Packers Football Stadium, a record number of GED graduates, extended class hours

for our English Language Learners, a year round Neighborhood Ambassadors Program, and the expansion of our Community Learning Centers to include Journey Days, programming on school days when MPS is closed.

The effects of our projects are felt well beyond the walls of our facilities. There is a new energy and vibrancy in the community. Neighborhood pride has increased. Crime has been reduced. Most importantly, a “can-do” attitude is permeating the neighborhood and our residents.

We look forward to identifying new initiatives to keep this momentum going.

Thank you for contributing to our success.

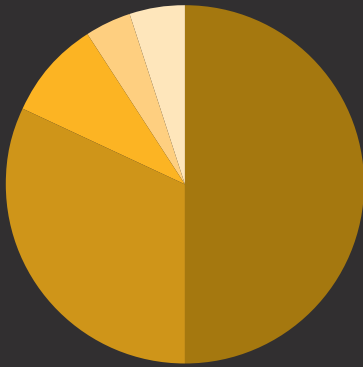
Together in the Journey,
Michele Bria, Ph.D., *Chief Executive Officer*
Chris Calvelli, Chairman, *Board of Directors*

JOURNEY HOUSE MOVES FAMILIES OUT OF GENERATIONAL POVERTY THROUGH ADULT EDUCATION, WORKFORCE DEVELOPMENT, AND YOUTH DEVELOPMENT USING A SELF-HELP PHILOSOPHY. ANNUALLY WE SERVE OVER 6,100 CHILDREN AND FAMILIES.



2013 NUMBERS

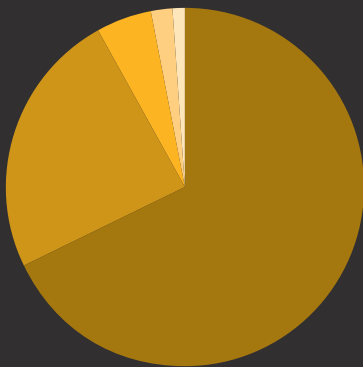
DEMOGRAPHICS



| | |
|------------------|-----|
| Latino | 50% |
| African American | 32% |
| Caucasian | 9% |
| Asian American | 4% |
| Other | 5% |

6,123 TOTAL UNDUPLICATED NUMBER SERVED

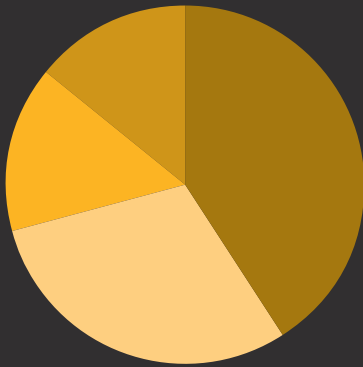
REVENUE



| | | |
|-------------------|-----|---------------|
| Contributions | 68% | (\$2,017,998) |
| Government Grants | 24% | (\$703,594) |
| Other | 5% | (\$154,131) |
| Contract Services | 2% | (\$56,248) |
| Fundraising | 1% | (\$20,330) |

\$2,952,301 TOTAL REVENUE

EXPENSES



| | | |
|----------------------------------------|-----|-------------|
| Youth Programs | 41% | (\$995,887) |
| Adult & Workforce Development Programs | 30% | (\$735,928) |
| Fundraising | 15% | (\$363,609) |
| Management | 14% | (\$355,298) |

\$2,450,772 TOTAL EXPENSES

FOOTBALL STADIUM GRAND OPENING



On June 6, 2013, the Journey House Packers Football Stadium opened with a grand community celebration and ceremony. More than 400 city officials, representatives from Journey House and Milwaukee County Parks, business leaders, project partners, and community residents gathered in the Stadium at the southeast end of Milwaukee County's Mitchell Park to commemorate the event.

Mark Murphy, Green Bay Packers President and CEO, served as the keynote speaker with additional remarks made by Governor Scott Walker, Milwaukee County Executive Chris Abele, Milwaukee Mayor Tom Barrett, and Milwaukee County Supervisor Peggy Romo West. After the program concluded, all of the VIPs present lined up on the 50-yard line and christened the stadium by throwing passes to football players from the Journey House Packers teams. Log on to <http://www.journeyhouse.org/2013-journey-house-packers-stadium-grand-opening-video.html> to see highlights of the excitement.

The Stadium boasts the only NFL field with a logo outside of an NFL stadium in the entire country. The space serves as the home field for the Journey House Youth Football and Cheerleading Program and League. The league is made up of seven organizations that represent a cross-section of ethnically diverse, low-income youth from the city of Milwaukee and has over 300 participants (ages 6 to 14). Marquette University High School lacrosse teams and freshmen and junior varsity football teams play home games on the field as well.

During its first football season, the Saturday Game Day hosted over 4,200 fans EVERY Saturday. An average of 500 fans, including players' families and local residents, attended each of the weekly games to cheer on our young men and women. The Stadium has become a new Milwaukee destination and draws visitors from the entire County.

This state-of-the-art facility, a partnership between Journey House and Milwaukee County Parks, hosts the Green Bay Packers former Ray Nitschke Practice Field, stadium seating for 675 fans with an enclosed storage and concession stand underneath, stadium lighting, and a professional score board.



In addition to health and wellness, the Stadium is changing the game in the Clarke Square neighborhood through:

COMMUNITY BUILDING: Mitchell Park is more active than it has been in the past decade, providing a gathering place for visitors and residents alike.

DESTINATION POINT: The stadium has become Milwaukee's new destination point. Everyone wants to see the Packers' field and take his or her picture on the "G".

ECONOMIC DEVELOPMENT CATALYST: Real estate in Clarke Square is moving at an accelerated rate. Homes are going on and off the market on the same day. Businesses are attracted to the volume of people who attend the stadium.

PUBLIC SAFETY: A busy park is a safe park. During the stadium's first summer in use, violent crime in the neighborhood was down. We, along with the Milwaukee Police Department, feel it is linked to the new Stadium and Journey House's new Community Center.

“DRESS TO GIVE” FASHION SHOW

On October 26, 2013, the Clarke Square Neighborhood became a fashion hot spot as the Journey House Charitable Foundation hosted its first fundraising event, a fashion show called *Journey to the Runway, Dress to Give*. The event took place in the Journey House Center for Family Learning and Youth Athletics and featured the season’s hottest trends for both men and women.

Models, a blend of professionals, Journey House participants, and community residents, ranging in age from 18 to 70 plus took to the catwalk showcasing looks from Banana Republic, Boutique Larrieux, Milano’s, Maurices, Serenitees, NL Suits, and the Milwaukee Wave. Items seen on the runway, along with jewelry from Holy Inspired and May Vora, were available for purchase after the show.

Guests were treated to a purple carpet reception complete with photographer. During dinner Journey House youth performers and DJ Camille Henderson provided entertainment. Emcees for the show were Sue Black, Owner and President of the Milwaukee Wave, and Channel 12 New’s Marianne Lyles. Check out a movie about the evening on YouTube at <http://www.youtube.com/watch?v=-iYVO92FaQg&feature=youtu.be>.

The event grossed over \$28,000 to support Journey House programs and services.

Fashion Show Fun Facts:

173 seated guests for dinner and show

45 models

12 hair and make-up stylists

20 fashion stylists

12 fashion show coordinators, directors & producers

30 youth performers

16 committee members



- Journey House was awarded the Business Journal’s Best Public/Private partnership of the year for the Journey House Center for Family Learning and Youth Athletics, a collaborative effort with Milwaukee Public Schools.
- Our annual Gala and Auction took place at the Potawatomi Bingo Casino Exposition Center and welcomed 395 guests on April 19th. Nine voice auction items and 265 silent auction items helped to raise \$238,000 in support of Journey House!
- In June we celebrated the Grand Opening of the Journey House Packers Football Stadium in Milwaukee County Mitchell Park. The inaugural season was very successful with an average of 4,200 fans visiting the Stadium weekly for games.
- On June 23rd over 70 Journey House participants and their families headed to Boerner Botanical Gardens for Family Fun with the Bug Whisperer. Attendees enjoyed a stroll through the grounds to discover insect life after dark.
- *Journey to the Runway, Dress to Give*, a Fashion Show fundraiser featuring one of the most ethnically diverse groups of models in the city, took place on October 26th and brought in over \$28,000 to benefit Journey House programs and services.
- Our Halloween Spooktacular welcomed 789 guests and was one of the largest events hosted by Journey House over the course of the year. The event again featured the costume contest, a crowd favorite, with prizes for the winners ranging from gift cards to bicycles.

- Our annual Thanksgiving Dinner took place on November 26th. Four hundred seventy-seven guests filled our gym and enjoyed a traditional seated holiday dinner served by 47 volunteers.
- The Sheriff’s Department held its annual Shop with a Cop at Journey House on December 7th. Seventy-eight area youth (40 from Journey House) were paired with local law enforcement officers and treated to a breakfast at the Hilton Hotel Milwaukee and a day of holiday shopping complete with gift card to buy presents for their families.
- Our Winter Wonderland celebration took place on December 21st. Among other highlights, 671 Journey House participants and community residents enjoyed a concert by the Milwaukee Symphony Orchestra as part of their 2013 Hometown Tour.
- 283 volunteers put in over 11,600 hours service at Journey House
- We had 80 GED Graduates in 2013 with a record breaking 49 GEDs earned in the Fall Semester alone.
- 91 of our participants were placed in jobs through our Urban Careers Institute
- 20 of our students earned their United States citizenship thanks to a generous grant from the Charles E. Benidt Foundation.
- Over the course of the year, we hosted 88 tours of our facility and stadium with 370 guests from 12 countries.

CHANGING THE GAME THROUGH ACADEMICS



Through Lifelong Learning programs, which focus on early childhood development, youth academic enrichment, and adult education, we provide our participants with the foundation they need to go the distance in becoming self-sufficient.

BASIC SKILLS/GED

With classes available in both English and Spanish, Journey House's Basic Skills/GED classes are centered on our students and their individual needs. The classes prepare the students for the General Education Development tests by building their skills in reading, writing, math, and communications. In 2013, 376 adult learners participated in these programs with a record 80 students becoming GED graduates!

ENGLISH LANGUAGE LEARNERS

The 2010 Census shows that over one quarter of Clarke Square residents speak very little or no English, a fact that makes the American culture and job market a real challenge to navigate. The goal of our ELL classes is to increase employment opportunities for the adults in our community. Our students improve their ability to read, write and speak in English, opening many doors for employment. We had 444 ELL students in 2013.



CHILDCARE

Our adult students have access to our bilingual, on-site childcare that provides a curriculum rich in social, physical, and intellectual stimulation designed to prepare its participants for Head Start and K4. This service is offered at no charge. Three hundred sixty-two kids took advantage of the program in 2013.



CITIZENSHIP

Through a grant provided by the Charles E. Benidt Foundation, Inc. Journey House offers the Citizen Preparation Class for Adult Learners. Our instructor assists immigrants through all parts of the citizenship process, from submitting the application of naturalization to preparing for the interview portion of the N-400 Naturalization process. The program incorporates a service learning component to teach participants how to become better citizens in the community. Twenty of our students became U.S. citizens in 2013.



COMMUNITY LEARNING CENTERS

Journey House serves as the lead agency for five Community Learning Centers (CLCs): Albert E. Kagel Elementary, Bay View High School, H.W. Longfellow K-8 School, Humboldt Park K-8 School and South Division High School. These programs increase student achievement and learning, provide alternatives to being home alone and offer safe havens from unwanted influences for over 600 kids a day.

YOUTH LEADERSHIP PROGRAMS

Our gender specific youth leadership programs, Girls in the House and Esquires, were designed to develop the personal, professional, and social skills necessary to overcome adversity and achieve success. One hundred twenty-one teens, ages 13 to 19, were involved in these programs in 2013.



COLLEGE CAREERS

This program prepares students for high achievement in post-secondary education and the workforce. The program transitions students into college by offering assistance in selecting a school, obtaining financial aid, and completing the necessary paperwork required for college admission. It emphasizes the development of social and cultural capital as a key factor, when combined with rigorous academic preparation, for students to succeed in college. Twenty-seven of our core youth alumni were enrolled and succeeding in college at the start of the 2013-14 school year.

CHANGING THE GAME THROUGH ATHLETICS



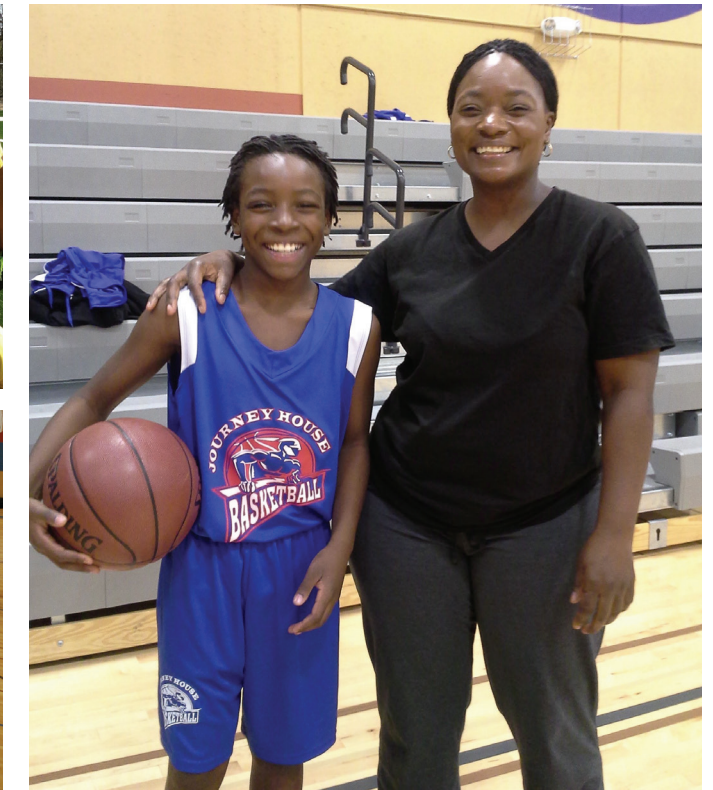
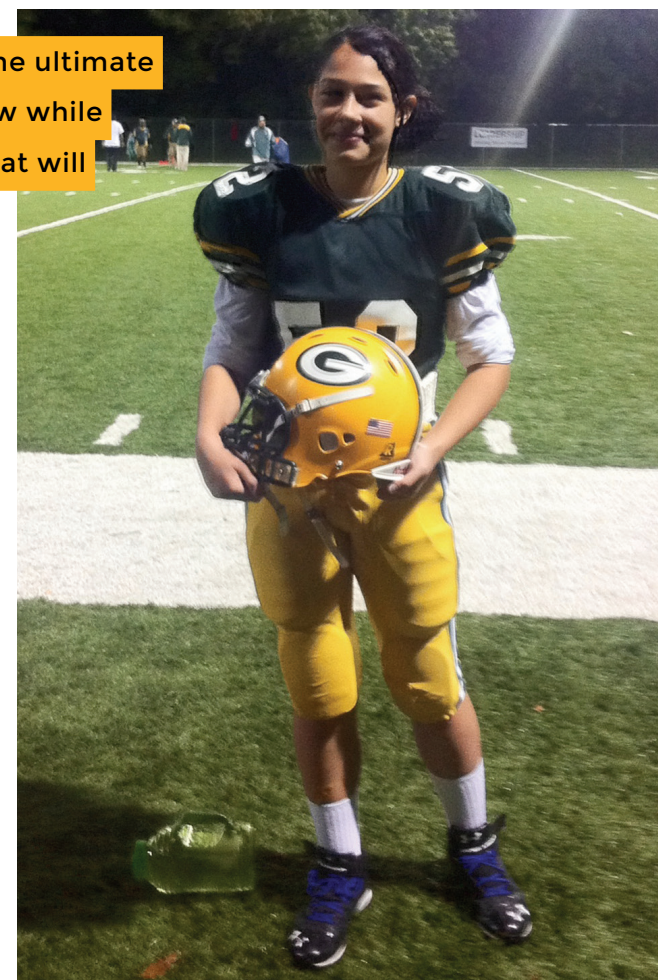
Our athletic programs provide our participants with the ultimate classroom, giving them a place to learn, play, and grow while developing important character traits and life skills that will benefit them both on and off the field.

FITNESS

With a focus on improving the health and wellness of our participants and neighborhood residents, Journey House hosted several different exercise classes in our dance studio throughout the year. Offerings included Zumba, Pilates, Nia, and Martial Arts. Two hundred forty-four people took advantage of the opportunity to get moving.

FOOTBALL

Journey House operates the most ethnically diverse youth Football League in the city. The League uses the NFL Player Development Program to teach character building and life skill development along with the fundamentals of the sport. There were 315 players under helmets for the 2013 season.



CHEERLEADING

Under head coach Daniella Yates and Assistant Coach Dana Metoyer, 13 girls, ages 6 to 14, enhanced team spirit and got the crowds engaged every Saturday during football season at the Journey House Packers Football Stadium. The squad also took to the runway at our fashion show fundraiser, performing in front of 200 guests.

SOCCER

Journey House fielded two soccer teams, a U5-6 and a U7-8, in the Milwaukee Urban Soccer Collaborative's indoor soccer league during the fall. We also hosted open soccer in our Center's gym every Wednesday night. This was open to players of all ages and skill levels. Combined, 117 youth and adults took part.

OPEN RECREATION

Each night during the week, we open our gym to the community for a variety of activities. During 2013, we hosted adult volleyball, basketball for several different age groups, soccer, and badminton. Nearly 1,500 people came through our doors to participate.

CHANGING THE GAME THROUGH VISUAL & PERFORMING ARTS

The arts strengthen our community through creativity, encouraging self-expression and the exchange of ideas. Journey House offered a variety of performing and visual arts during 2013, inspiring our students to respond to the everyday world in a more perceptive way.

Performing Arts

DANCE

Seventeen 4th, 5th and 6th graders took part in Journey House's first **Danceworks Mad Hot Ballroom and Tap** (MHBT) Class. MHBT is an annual 12-week, citywide program that brings arts and physical education to underserved, urban youth. The program is capped off each season with a competition at the BMO Harris Bradley Center in downtown Milwaukee.

In partnership with Above the Clouds, Journey House offered a **Modern Jazz** class in the spring, summer, and fall. In total, seventy-five youth took part in this versatile class that blends a wide range of movement styles and energetic jumps with fluid gestures.

Above the Clouds also offered an adult **Salsa** class in the fall. Seven participants enjoyed learning this hybrid style of dance.

With the help of community volunteer Ashley Mitchell, 156 teens learned **African Dance** over the summer.



MUSIC

Journey House's **Drumline** was made up of nine musicians, grades 5 through 8. The Drumline performed each Saturday during football season at the Journey House Packers Football Stadium and at Journey House's inaugural Fashion Show in October.

Participants were given the chance to learn **African Drumming**. Fourteen youth worked with Keba Diabate during the fall developing rhythmic skills and basic drum techniques.



Visual Arts FINE ARTS

Three hundred and twenty-seven people enjoyed our **Creative Arts** class, offered in spring, summer and fall by a community volunteer. This class used different mediums and art forms to teach expression.

Our **Exploring Arts** class was a summer course that introduced 75 students to watercolor painting, drawing and 3D art on the computer.

A **Knitting & Crocheting** class was taught over the fall. Eleven needle crafters of different skill levels enjoyed working with a staff member from one of our Community Learning Centers.

Through a partnership with Milwaukee Public Theater we hosted a mask making workshop for the Latino Carnival attended by 131 people and Dia de los Muertos activities for 83 youth.

GRAPHIC ARTS

Photoshop Design was offered in our state-of-the-art iMac lab over the summer and in the fall. In total, 36 participants ages 9 and up learned image editing.

A summer class was offered in **Illustrator Graphic Design**. Seven students increased their knowledge of graphic design and improved their digital literacy.



CHANGING THE GAME THROUGH WORKFORCE DEVELOPMENT

One of the major challenges facing the residents of Milwaukee's near Southside Clarke Square community is unemployment/under-employment. Journey House provides economic and workforce development programs to combat these problems. These programs have evolved through the years to meet the needs of our participants, resulting in a powerful bilingual (English/Spanish) workforce development program that has built bridges between Milwaukee's unemployed residents and local employers.

URBAN CAREERS INSTITUTE (UCI)

As one of only 63 LISC Financial Opportunity Centers (FOC) nationwide, Journey House's Urban Careers Institute is designed to help participants reach their long term professional and economic goals. The FOC model focuses efforts on three components: employment placement and career improvement; financial education and coaching; and income supports. We accomplish this by a one-on-one-coaching approach. This approach also builds long-term relationships with participants, focusing on achieving goals over time and working with them hand-in-hand helps to ensure the success in the workplace.

In 2013, 91 of our participants were placed in jobs and nearly 500 received financial counseling. For the third year in a row, we acted as a Volunteer Income Tax Assistance (VITA) site. For FY2013, 183 returns were filed, resulting in over \$350,000 in refunds.

NEIGHBORHOOD AMBASSADORS (NAP)

Four years ago, Journey House became part of the Neighborhood Ambassadors Program. In partnership with Alderman Bob Donovan, the City of Milwaukee and United Migrant Opportunity Services (UMOS), we work with participants to gain work experience, prepare for the workforce, develop leadership skills and ultimately, get a job. In 2013, this program was expanded from a summer program to a year-round initiative.



CHANGING THE GAME THROUGH PARTNERSHIP

During 2013, community collaborations with 71 businesses and organizations allowed us to expand educational offerings, grow our workforce and leadership development programs and provide our participants with exposure to experiences and resources. A few of these partnerships are highlighted below.

MILWAUKEE PUBLIC SCHOOLS

For more than a dozen years, Journey House has worked in partnership with MPS to offer enrichment and support activities to at-risk youth through Community Learning Centers (CLCs). As the lead agency for five CLCs throughout the city's Southside, Journey House provides safe and engaging after-school programs for over 600 kids a year.

Our relationship with MPS deepened in 2012 with the opening of the Journey House Center for Family Learning and Youth Athletics. A collaborative effort with MPS's H.W. Longfellow K-8 School, this center provides the infrastructure to change lives and offer hope.

MILWAUKEE COUNTY PARKS

The Journey House Packers Football Stadium is a testament to the power of community partnerships. Located in Milwaukee County's Mitchell Park, this Stadium provides the Clarke Square neighborhood with another anchor in the transformation that is changing the game for residents of Milwaukee's near Southside communities.

DISCOVERY WORLD

Journey House has collaborated on a number of different initiatives and activities with Discovery World over the last five years, each providing our participants with unique opportunities and experiences. These offerings have ranged from scholarships to summer camps to learning experiences with the Kohl's Mobile lab, all resulting in personal growth.

CLARKE SQUARE NEIGHBORHOOD INITIATIVE (CSNI)

Journey House serves as a partner with CSNI to improve the quality of life in Clarke Square. We work hand in hand to implement the nine key strategies outlined in the Clarke Square Quality of Life Plan, all geared toward revitalizing the community.

MEDICAL COLLEGE OF WISCONSIN/UNITED NEIGHBORHOOD CENTERS OF MILWAUKEE (UNCOM)

Journey House works closely with the Medical College of Wisconsin and UNCOM on the Violence Prevention Initiative. This initiative uses evidence-based programs to reduce youth violence in Milwaukee neighborhoods.

MILWAUKEE AREA TECHNICAL COLLEGE

Journey House serves as a Milwaukee Area Technical College delegate agency. MATC has two computer labs and four part-time faculty on-site at Journey House.

INTERNATIONAL ASSOCIATION FOR HUMAN VALUES

Journey House hosted a Youth Empowerment Seminar (YES!) instructor and served as a training site for YES! educators, youth development staff and youth.



A WINTER WONDERLAND TO REMEMBER

Nearly 700 Journey House participants and community residents filled the gymnasium of the Journey House Center for Family Learning and Youth Athletics on December 21, 2013. The crowd, here as part of our annual Winter Wonderland holiday celebration, was treated to a concert by the Milwaukee Symphony Orchestra. This 45-minute performance, part of the Symphony's "Hometown Holiday Tour," brought the gift of music to the City's near Southside and provided an experience that many of our attendees had never had before.

Other event highlights included a visit by Santa, holiday crafts, and toys and books distributed to all youth attendees.

A special thanks to the Young Milwaukee Charitable Organization, Inc. for donating over 1,200 toys to be distributed to Journey House families at the event and for helping to underwrite the celebration. Over 400 gift cards were given to teens thanks to the Young Milwaukee Charitable Organization and Wendy and Doug Proebsting.

A slideshow of the event can be viewed on our web site <http://www.journeyhouse.org/winter-wonderland-2013.html>.



GRANTS & CONTRACTS



CITY OF MILWAUKEE

Community Development Block Grant

- Workforce Development (Neighborhood Ambassadors)

LOCAL INITIATIVE SUPPORT CORPORATION (LISC)

Financial Opportunity Center

MILWAUKEE AREA TECHNICAL COLLEGE (MATC)

General Purpose Revenue

- Adult Basic Skills
- Pre-College Division

MILWAUKEE COUNTY

Safe Alternatives for Youth

MILWAUKEE PUBLIC SCHOOLS (MPS)

Community Learning Centers

- Bay View Community Learning Center
- Humboldt Park K-8 Charter School Community Learning Center
- Kagel Elementary School Community Learning Center
- Longfellow K-8 School Community Learning Center
- South Division High School Community Learning Center
- Summer Stars

MOUNT MARY UNIVERSITY

College in the Community

UNITED NEIGHBORHOOD CENTERS OF MILWAUKEE

Violence Prevention Initiative

Helen Bader Cultural Arts Grant

Milwaukee Area Workforce Development

WISCONSIN TECHNICAL COLLEGE SYSTEM BOARD

Adult Education and Family Literacy Program

Civics/English Literacy



2013 JOURNEY HOUSE DONOR REPORT
(Contributions by constituent)

\$50,000 or Greater

The Burke Foundation
Charles E. Benidt Foundation, Inc.
Jeanne and Greg Herrle
Zilber Family Foundation, Inc.

\$25,000 to \$49,999

Barbara and Dennis Klein
M&I Foundation
WaterStone Bank Fund

\$10,000 to \$24,999

Anon Charitable Trust
Anonymus
Jean and Patrick Dunks
Iris and Luis Garcia
Wendy and Craig Kasten
Grace M. Merten
PNC Bank
Standard Process
Todd Wehr Foundation, Inc.
UW Credit Union
Mary and Tom Wisniewski

\$5,000 to \$9,999

Kelly and Chris Calvelli
CT Charitable Fund
Dorothy Inbusch Foundation, Inc.
Green Bay Packers Foundation
Hydrite Chemical Co.
Sarah and Vladimir Jelencic
KBS Construction, Inc.
Lynn and Brian Kilb
Liz and Dan Kolb
Ladish Co. Foundation
Lori & Rick Rosmann Foundation
Mary and Wayne Matzke
Julie and Brian Nelson
Northwestern Mutual
Wendy and Douglas Proebsting
RBC Foundation - USA
United Way of Greater Milwaukee, Inc.
Wisconsin Energy Foundation

\$1,000 to \$4,999

American Transmission Company
Candee and Ray Arndt
Badger Meter Foundation
Baird Foundation, Inc.
Dr. and Mrs. Alfred Bader
Bay View Neighborhood Association
Beatrice A. Benidt
Julie and Bill Beres
Lori Bergen
Bergstrom Corporation
BMO Harris Bank
BMO Harris Equipment Finance Co.
Michele Bria
Charles Brown
Craig Brown
Kathie and John Buono
Lynn and Mike Byrne
Trish Calvy
Katy and John Cantieri
Erin and Dan Cary
Chris and Mark Ciborowski
Clare M. Peters Charitable Trust
Karen and Larry Coon
Maureen Crowley and Carl Malischke

Michelle and Steven Dziedzic
Eisner Creative Foundation
Eppstein Uhen Architects, Inc.
Cheryl and Richard Erdmann
Sandy and Brian Gardipee
Julie and Michael Graverson
Ann Marie and Jim Heffernan
Ruth and Gregory Herrle
Norman E. Herrle
Hispanic Professionals of Greater Milwaukee
Cindy and Paul Honkamp
Jewish Community Foundation
Jewish Family Services, Inc.
Raejean M. Kanter
Thomas Keeley
Patti Kiefer
Julie and John Kita
Michael Kleber
Claire and Joseph Klein
Megan Klein
Jackie and Michael Klein
Patrice and Robert Klimoski
Courtney and Chris Kohn
Catherine A. La Fleur
Mary Jane and Lynn Laufenberg
Lori and David Leidl
Wendy and Anthony Machi
Dawne and Ray Manista
Marquette University
Jill and Frank Maurer
Mary Lou and Richard McGuire
John Meerschaert
Tami Quinlan and John Miceli
Caroline and Tim Michaud
Suzette and Jim Miller
Milwaukee Admirals
Milwaukee Urban League
Moore Oil Company
OnCourse Learning
Peck Foundation, Milwaukee LTD.
Philip Rubenstein Foundation
Richard Pieper
Posner Foundation
Karen and Jim Schlater
Erich Schwenker
Jim Slocum
St. John Vianney Parish
St. Monica Congregation
Target Corporation
The Travelers Foundation
Tri City National Bank
United Heartland
Carmen Ventura
Jane and Randy Vosters
Patricia and Ralph Weber
Debbie and Jerry Wick
Jackie and Matthew Wieck
Sharon and Jim Williams
Wochinske Family Foundation, Inc.
Rose Vanevenhoven and Jim Woloszyk
Beth and Gary Zimmerman

\$500 to \$999

Cami and Darryl Adel
Victoria and Ronald Alberts
Bonnie and Rick Bartelme
Sue Black
Sharon and Dan Bostedt
Gretchen and Bill Burns
Lucy and Jim Clancy
Kathleen and Steven Clark
Sandra and Robert Dempsey

Douglas Dynamics, LLC
Kristen and Michael Doyle
Jeanne DuBois
Sigrid Dynek
Ellen and Dennis Engel
Cheryl and John Gehringer
Greater Milwaukee Foundation
Julie and John Hengel
Norma and John Herbers
Herbert H. Kohl Charities, Inc.
Roylene and Michael Heyer
Stephanie and Kevin Honkamp
Colleen and Richard Kalscheuer
Jim Keegan
Ted Kellner
Keyes Charitable Trust
Christine and Patrick Keyes
Kathy and John Koehler
Teresa Kramer
Sharon and Sean Lafferty
Kathy and Curt LeBeau
Rachele and Bob Lehr
Amy and Mike Lovell
Kimberly and Gregg Mangarelli
Amy and Nate Marshall
Glorianne Mather
Heidi and Dave McCormack
Julie and Tim O'Malley
Salley Merrell and Ely Leichtling
Racine Danish Kringle
Kris and Jim Rappe
RBC Royal Bank
Mary Reinders and Paul Quick
Geri and Paul Seidenstricker
Lynn and Dan Shannon
Eileen and George Stone
Ann and Christopher Swain
Katy and John Thomas
Liz and John Thometz
Marc Tozzi
Anne Tremel
Jane and Peter Wick
Wisconsin Literacy, Inc.
Julie and John Wolf
Julia and Brian Wort
Young Milwaukee Charitable Foundation
Carl Zaar
Jeremy Zuleger

\$250 to \$499

A.L. Schutzman Co.
Douglas E. Artus
Lisa and David Ball
Barbara Baron and Del Januchowski
Ann Bria
Marilyn anad James Bria
Deborah and Michael Burke
Douglas Carlson
Creative Busines Interiors
Gloriann and Keric DeChant
Kim and Ryan Devine
Becky and Tom Druml
Rosslyn Ford
Dea and Tom Fotsch
Vicki and Larry Francione
Cynthia and Michael Gallagher
Jill A. Gardetto
Heidi and Bert Garvin
Sonja and John Gurda
Peggy and Thomas Hauser
Ariel Hernandez
Christine and Jim Jensen

Melissa Jerke
Judy and Gary Jorgensen
Debbie and Michael Kaerek
Lisa nd Scott Kelley
Roman Kelly
Tim Kempen
Susan Freundl and Charles Klein
Lisa and Mike Koenen
Gerri and Bob Kolb
Rachael and Glen Koval
Michael Laliberte
Mary Jo and Fred Lautz
Legacy Salon & Day Spa
Dawn and Tom Luken
Jocelyn and Greg Martinek
Paul Meier
Linda and Michael Mesirow
Anne and Tom Metcalfe
Mary D. Miceli
Molly and James Miller
Sue and Michael Miller
MillerCoors
Susan and Robert Murray
Michelle and Cory Nettles
Pat and Mark Ohlendorf
Pasternak & Zirgibel, S.C.
Cathleen and David Patrick
Christine and Brad Piper
Jill Pomplun
Karen and Ken Reichert
Maureen and Karl Schimmel
Jill and Karl Schindler
Janice and Carl Schmidt
Carrie and Michael Schmitt
Diane and Chris Schoenherr
Maureen and John Small
Lynelle and Robert Sukalich
Timothy Terry
Lisa and John Thimmesch
Tonya Vachirasomboon and Issac Thompson
David Treis
Laurence and Trevor Trimble
TSS Photography
UnitedHealth Group Dollars for Doers Program
Uptown Motors
Lisa and Andres Villanueva
Martin Weddle
Jennifer and Bob Wilcox
Ella and Marc Wilson
Matthew Womack
Kathy and Tom Yoss

\$1 to \$259

Carolyn and John Ahrendt
Patricia Algiers
Priscilla Alva
Barb and William Andrekopoulos
Anonymous
Assurant Health Foundation
Dora Baca
Lori A. Baldwin
Andrea Barrutia
Claire Becker
Debbie Beres
Geraldine and Andrew Bergeson
JoAnn and Thomas Berk
Denice and Gerald Bernstein
Tari P. Blazei
Laura Bray
Audra and Joel Brennan
Caroline H. Brzezinski
Caroline and Kevin Burns

Dwayne Burtin
Mary Lee and Rick Calvelli
Roy Cambronero
Bridget and Daniel Carlson
DJ Cartedge
Club Deportivo Latino Inc.
Robert D. Cooper
Andrea and Nick Costello
Martha and Richard Davis
Diverse City Fitness LLC
Julie and Mike Dreyer
Pam and Riley Enright
Denise Ferreira and David Ryan
Denise and John Foley
Erin Frederick
Claudia and Santiago Frias
Joseph Gartner
Marcia and Tom Gerhartz
Linda and Gary Gerschke
Beth Jacobassi
Joan Gigl
Linda and Thomas Gilgenbach
Ann and Ryan Glor
Evon and Charles Green
Thomas Harris
Anne Marie and Mark Heinen
Joan S. Hornak
Jessica Hubrich
Aaron Jais
Cora and Thomas Janus
Terran and Robert Jerke
Jane and William Jeruc
Jessica and David Johnsen
Vincent Johnson
Paula Kiely
Anna and Dave Kirk
May and Russ Klisch
Dorothy Krupa
Bridget and Pat Lafferty
Dawn and T J Laney
Virginia and Evan Lenhardt
Joan and Gordon Liebl
Juan Jose Lopez
Andrea and Matt Loss
Yumi and Clark MacAlpine
Richard E. Madigan
Gladys and Eugene Manzanet
Beverly Marinello
Leonard Marotte
Donna and Bob McCormack
Christine McGee
Sharon and James McGowan
David McIntosh
Merchant Services A First Financial USA LTD
Company
Janet and Doug Miller
Sara Swanson and Mark Mone
Jeffrey Morgan
John R. Mueller
Cherise and Johnny Myers
Patricia Najera
Mary Ellen Nash
National Governors Association
Jill and Bob Neimon
Katie and Joel Nelson
Rhonda and Mark S. Nelson
Christian and Rick Paschke
Curt A. Paulsen
Mary Pat and Dennis Pfeil
Connie and Tom Pire
Gloria J. Pitchford-Nicholas
Laury and Mike Post

Jean and Tim Preuninger
Quentin Prince
Mary Ann Raash
Peter Rafferty
Sylvestra Ramirez
TJ Redmond
Mary Ann and Greg Renz
Jill Robertson
Carrie Schroeder and Thomas Ruehle
Kristine and David Samuel
Bill Sandoval
Minerva Santiago
Kelly and Cal Schattschneider
Barbara and John Schleicher
Tina and Russ Schneider
Marlene and Tom Scholz
John T. Schroeder
Greg Sell
Sandra Shedivy
Sara and Chris Smith
Colleen and Dan Smith
Dorrie and Steve Stanislawski
Genevieve and Chad Szeklinski
Gina and Brad Tegge
Gaylene and J.D. Townsley
Marc V. Tozzi
Travelers Cybergnants Inc.
Natalie Udvare
Cynthia and Mark Van Cleave
Karen and Dean Veling
Voit & Hamilton, LLC
Tonette and Scott Walker
Sue and Scott Wick
Kim Wynn
Judy A. Zwitter

In Memory of

John Owen Edwards
Darla Fredricks
Richard Fridl, father of Karen Schlater/
father-in-law of Jim Schlater
William Goldammer
Antoinette Schlater, mother of Jim Schlater
Artie Thompson
Richard Villa Sr.

In Honor of

Kathy and Steve Clark's wedding anniversary
and vow renewal
Anne Tremel and James Slocum's wedding
Tonette Walker
Jerry Wick
Marie Avi—her life and motherhood

2013 JOURNEY HOUSE CHARITABLE
FOUNDATION DONOR REPORT

(Contributions by constituent)

\$50,000 or Greater

Charles E. Benidt Foundation, Inc.

\$5,000 to \$49,999

Kelly and Chris Calvelli
Sarah and Vladimir Jelencic
Liz and Dan Kolb
Tami Quinlan and John Miceli
BMO Harris Bank

\$1,000 to \$4,999

Charles Brown
Gonzalez, Saggio & Harlan LLP
Barbara and Dennis Klein

Jodi Peck and Les Weil
Suzette and Jim Miller
Karen and Jim Schlater
Sharon and Jim Williams

\$500 to \$999

Mary and Michael Altschaeffl
Candee and Ray Arndt
Michele Bria
Raejean M. Kanter
Eileen and George Stone
Carl Zaar

\$250 to \$999

Douglas E. Artus
Julie and Bill Beres
Willette Bowie
Ann Bria
Cornerstone Church of Ozaukee Co, Inc.
Judy and Dave French
Lori and David Leidl
Dawn and Greg Matzke
Beth and Greg Myers
Julie and Brian Nelson
Karma and Lyle Orwig
Carl Quindel
Dorrie and Steve Stanislawski
Carmen Ventura
Kelly and Mark Witt

\$1 to \$249

Maria Acevedo
Carina G. Barton
Beatrice A. Benidt-Webster
Deborah L. Berg
Mary L. Bergeson
Tari P. Blazei
Pamela Bleimehl
Marilyn and James Bria
Kathie and John Buono
Kathy and Steve Clark
Maureen E. Crowley
Cheryl and Richard Erdmann
Robin and Michael Gonring
Lorraine and Christopher Gramling
Evon and Charles Green
Michael W. Hatch
Annette and Gregory Hathaway
Damaris Hurtado-Camacho
Jani-King
Jane and William Jeruc
Lynn and Mark Kern
Shanda M. Kluge
Mark Lewandowski
Joan and Gordon Liebl
Dawne and Ray Manista
Claudia and Michael Mayer
Linda and John Meurer
Pat Miceli and John Keating
Cherise and Johnny Myers
Tamara and Ivan Olivas
Laura G. Perez
Peggy Romo West
Lisa and Tylor Sanborn
Leigha and Mike Schatzman
Mary Schmidt
Marlene and Tom Scholz
Mary and Thomas Sheffield
Lori and Joe Stillone
Steve Van Dyck
Ella and Marc Wilson

In Honor Of

Ann Bria

2013 JOURNEY HOUSE GIFTS IN KIND REPORT

(Contributions by constituent)

Absolute Pilates
Keri Ackley
Acura of Brookfield
ALFA Florist
Allen-Edmonds Shoe Corp.
America In-Home Closets & Technology
Pamela Anderson
Anonymous
Amanda and Josh Appelbaum
Argosy Ltd.
Tom Auer
Baptista's Bakery
Racquel Bell
Debbie Beres
Julie and Bill Beres
Bike and Roll Chicago
Bonefish Grill
Boucher Chevrolet
Brenda Bowe
Louise and Jack Boyle
Brennan's Market
Ann Bria
Malulani Bria
Marilyn and James Bria
Michele Bria
Briggs & Stratton Corp.
Bring Art Back Inc.
LouRawls Burnett
Gretchen and Bill Burns
Lynn and Mike Byrne
Junior Cadougan
Kelly and Chirs Calvelli
Mary Lee and Rick Calvelli
Trish Calvy
Katy and John Cantieri
DJ Cartedge
Cave of the Mounds
Cheesecake Factory Restaurants, Inc.
Chula Vista Theme Resort
Roberta Chwalek
Kathy and Steve Clark
Clarke Square Media Productions
Comedy Sportz
Karen and Larry Coon
Crate & Barrel
Creative Business Interiors
Sandra and Robert Dempsey
DeRosa Corporation
Destination Fitness
Digital Edge Imaging
Discovery World at Pier Wisconsin
Jane Doyle
Becky and Tom Druml
Emily Drummer
Ginny and Pat Dunphy
ESPN Desportes
Eclectica Beads
Kristen Eggert
El Rey Plaza
Elite Fitness and Racquet Clubs
Elkhart Lake's Road America
Cheryl and Dick Erdmann
Julie and Eric Erickson
Etcetera
Festa Italiana

First Stage Children's Theater
Theresa Flegel
Florentine Opera Company
Mary and Paul Fox
Fred Astaire Dance Studio
Fresh Market
Friends of Journey House
Fundraising Rides.org
Jill Gardetto
Sandy and Brian Gardipee
Cheryl and John Gehringer
Kelly Gehringer
Nat Godley
Grande Cheese Company
Julie and Michael Graverson
Green Bay Packers
Gregory and Company
Grob, Inc.
Tamira Hamilton
Mike Hanneman
Sue and Dan Hastings
Julie and John Hengel
Jeanne and Greg Herrle
Cindy and Paul Honkamp
Victor Huyke
Jake's Restaurant
Jeff's Sports and Memorabilia
Journey House
Raejean Kanter
Wendy and Craig Kasten
Melissa Kempen
Kerns Carpet
Kingshead Hair Salon
Julie and John Kita
Klement's Sausage
Knick Salon & Spa
Kohler Company
Liz and Dan Kolb
Marybeth Kolb
Sue Koleta
Bridget and Patrick Lafferty
Lamplighter Farms
Lash Boutique of Brookfield
Legends of the Field
Anne Lehman
Lela's
Little Switzerland
Mollie Lucas
Dawn and Tom Luken
Wendy and Anthony Machi
Dawne and Ray Manista
Marcus Center for the Performing Arts
Marquette University
Glorianne Mather
Mary and Wayne Matzke
Heidi and Dave McCormack
Mary Lou and Richard McGuire
Paul Meier
Men's Warehouse
Michael Drake Music
Michael Waltrip Racing
Midwest Nutritional Service, Inc.
Molly and Jim Miller
MillerCoors
Milwaukee Ballet
Milwaukee Bucks
Milwaukee Business Journal
Milwaukee Food Tours
Milwaukee Pedal Tavern
Milwaukee Repertory Theater
Milwaukee Symphony Orchestra
Milwaukee Wave

Mollie Lucas
Moorehead & Rhodes
Mortensen Portrait Design
Judy and Cecil Negron
Joel Nelson
Neroli Salon and Spa
O'Donoghue's Irish Pub
Olive Garden
OnCourse Learning
O'Neil, Cannon, Hollman, DeJong & Laing S.C.
Osthoff Resort
Pabst Mansion
Pamela Anderson
Past Basket
Curt Paulsen
Pepsi Beverage Company
Permanent Baggage
Pfister Hotel
Photography by Danielle
Picardy Shoe Parlour
Posh Pets
Quintessa Medical Spa
Quintessential Care LLC
Racine Danish Kringle
Reinders, Inc.
Residence Design
Maria Reyes
Rivers End Gallery
Robert W. Baird & Co., Inc.
Paul Ruch
Rule Enterprise
Katie Ryan
Cristal and Matt SanFelippo
Daniel Santiago
Sartori Cheese
Saz's Catering
Karen and Jim Schlater
Schlitz Audubon Nature Center
Secure Fire & Safety
Serenitees Design
Shady Lane Greenhouse
Sharon Lynne Wilson Center for the Arts
Bridget and Patrick Sheahan
Sheila's Fine Jewelry
Shoot the Moon Photography
Simmas Bakery
Skydive Milwaukee
Jim Slocum
Soerens Ford
Splendide
Squire's Fine Men's Apparel
Standard Process
Eileen and George Stone
Wayne Stoop
Strauss
Studio 890
Hector Suarez, Jr.
Vera Suarez
Summer Snow
Sweet! East Dessert First
Fay Tellefsen
Telluride Paper Chase
Tim Terry
The Capital Grille
The Institute of Beauty and Wellness
Katy and John Thomas
Liz and John Thometz
Tickled Pink Boutique
Time Warner Cable
Tony & Friends Salon and Spa
Trek Bicycle Company
Anne Tremel

Ultimate Confections
Kaye and Ken Voll
Senator Leah Vulkmir
Tonette and Scott Walker
Walt Disney World
Waterford Wine Company
WE Energies
Jim Weggen
Westmoor Country Club
Westpro Power Systems
WHYoga
Sharon and James Williams
Mary and Tom Wisniewski
Wolf Peach Restaurant
Yo Mama!
Yoga Asylum
Carl Zaar
Safina Zius
Zoological Society of Milwaukee

2013 JOURNEY HOUSE CHARITABLE FOUNDATION GIFTS IN KIND REPORT

(Contributions by constituent)

Maria Acevedo
Lupita Aranda
Banana Republic
Racquel Bell
Ian Bennett
Mohammed Bility
Sue Black
Sarah Boardman-Miller
Boutique Larrieaux
Ann Bria
Malulani Bria
Dr. Michele Bria
Briggs & Stratton Corp.
LouRawls Burnett
Kelly Calvelli
Don Cameron
Tobias Canion, Jr.
DJ Cartedge
Nathan Cruz
Pablo da Silva
Nolman Davis
Theresa Delvalle
Sandra and Robert Dempsey
Keba Diabate
Betsy Diaz
El Rey Supermercado
Claudia Flores
Pastor Joes Flores
Sandy and Brian Gardipee
Gladys Gonzalez
Valerie Gonzalez
Lydia Hamilton-Monnie
Tamira Hamilton
Camille Henderson
Quintin Ivy
Holy Inspired Jewelry
Melissa Jerke
Deleono Johnson
Raejean M. Kanter
Joyce Smyth Keehn
Timothy Kinzey
Knick Salon & Spa
Eva Roldan Olivares Kryzanek
Nas Laine
Julie Liotta
Marianne Lyles
Gladys Manzanet
Richie Martin

Claudia Maturana
Maurices
Men's Warehouse
Dana Metoyer
Milano
Milwaukee Wave
Natalie Miskowski
Kayla Mitsanis
Molina Healthcare
Hewerton Moreira
NL Suits
Joel Nelson
LaReana Nichole
Oscar's Pub and Grill
Tamara Olivas
Biviana Perez
Carly Poth
Quentin Prince
Jeremy Reid
Jose Rocha
Armando Ramirez
Francisca Rodriguez
Oswaldo Romo
Brandon Rule/Rule Enterprise
Tyna Rule
St. Moritz Salon
Diana Sanchez
Serenitees
Rosio Serna
Samantha Stone
Studio Gear LLC
Patricia Sumnicht
Marquita Taylor
Julie Tenpas
Tri-Marq Communications
Kevin Turner
May Vora Jewelry
Catalina West
Erica West
County Supervisor Peggy Romo West
WISN Channel 12
Wisconsin Expo
Gina Wierzbicki
Wolf Peach Restaurant
Daniella Yates
Anna Zarnowski
Zilber Family Foundation

Every effort has been made to ensure accuracy in the 2013 donor list. If your name has been omitted, misspelled or incorrectly listed, please bring the error to the attention of Journey House by calling (414) 647-0548 or emailing blafferty@journeyhouse.org. Thank you.

PARTNERS IN THE JOURNEY

A special thank you to our corporate and government partners who have donated services, products, time and expertise to support the mission of Journey House.

Above the Clouds
Agape Community Center
A.L. Schutzmänn
Alverno College
Arts at Large
AT&T of Wisconsin
Athletes for Youth
AXA Advisors
Badger Mutual Insurance Company
BBJ Linens
Banana Republic
Betty Brinn Children’s Museum
Bicycle Works
BMO Harris Bank
Boutique Larreaux
Boy Scouts
Boys & Girls Clubs of Greater Milwaukee
Briggs & Stratton
Brookfield East Art Club
Bryant & Stratton Internship Program
Business Journal
Camp 360
Cardinal Stritch University
Carroll University Internship Program
Casa Romero
Cermak
Cesar Chavez Business District
Children’s Hospital
Choi Martial Arts Company
City of Milwaukee
Community Development Block Grant
Department of Community Development
Department of Public Works
Housing Authority
Mayor’s Office
Municipal Courts
Police Department
City Year
Clarke Square Media Productions
Clarke Square Neighborhood Initiative
Club Latino
COA Youth and Family Centers
Community Shares of Greater Milwaukee
Community Partners
Core-El Centro
Crate & Barrel
Crossmark Graphics
Dance Works
Department of Natural Resources
Discovery World
Divine Savior Holy Angels High School
Dr. Pepper/Seapple
El Rey
Eppstein Uhen Architects
ESPN Deportes Radio 1510
Escuela Verde
Everest College
Faith Builders (formerly Urban Heart)
Faith Technologies
Fields, Inc.
Foley & Lardner
Forest County Potawatomi
Community Foundation
Fox 6 News
FUEL Milwaukee
Girl Scouts
Goodsearch
Green Bay Packers
Greater Milwaukee Foundation
Greater Milwaukee Literacy Coalition
Greater Milwaukee Committee
Grob, Inc.
Helen Bader Foundation
Hilton Milwaukee City Center
Hispanic Chamber of Commerce
Hispanic Professionals of Greater Milwaukee
Hmong American Peace Academy

Holy Inspired Jewelry
Hunger Task Force
ICM Corporation
International Association for Human Values
Interstate Partners
JSD Professional Services
Johnson Insurance Services
JW Industries
KBS Construction
Keba Diabate
Keep Greater Milwaukee Beautiful
La Fleur Law Offices
Layton Boulevard West Neighbors
Legacy Salon and Day Spa
LISC Milwaukee
Marquette University
Communications Department
Service Learning Center
Trinity Fellows
Volunteer Center
Marquette University High School
Marriott Hotels
Martin Luther King Business Improvement
District
Maurices
Medical College of Wisconsin
Menomonee Valley Partners
Mequon Country Club
Michael Best & Friedrich
Midwest Nutritional Services, Inc.
Milano
MillerCoors
Milliman, Inc.
Milwaukee Admirals Hockey
Milwaukee Area Scholastic Chess Association
Milwaukee Area Technical College
Milwaukee Area Workforce Development Board
Milwaukee Ballet
Milwaukee Boerner Botanical Gardens
Milwaukee Brewers
Milwaukee Bucks
Milwaukee Center for Independence
Milwaukee Childhood Obesity Prevention Project
Milwaukee Christian Center
Milwaukee County
County Executive Office
Housing Wrap-Around
Mitchell Park Horticultural Domes
Parks and Recreation
Sheriff’s Office
Milwaukee County Zoo
Milwaukee Medical College
Milwaukee Public Library
Milwaukee Public Schools
Bay View High School
Humboldt Park K-8 School
Albert E. Kagel Elementary School
Longfellow K-8 School
South Division High School
Milwaukee Public Schools: Recreation Division
Milwaukee Public Museum
Milwaukee Public Theatre
Milwaukee Repertory Theater
Milwaukee Symphony Orchestra
Milwaukee Urban League
Milwaukee Urban Soccer Collaborative
Milwaukee Wave Professional Soccer
Milwaukee World Festivals
Milwaukee Yoga Movement
Molina Health Care
Mount Mary University
Mue Apparel
NL Suits
National Café
National Football League
Neighborhood House of Milwaukee
NeWaukee

Next Door Foundation
Nicole Acosta
Nonprofit Center of Milwaukee
Northcott Neighborhood House
Northwestern Mutual
Office Max
OnCourse Learning
Oscar’s Pub & Grill
Palermo’s Pizza
Parenting Network
P & H Mining
Pieper Power
Planning Council of Milwaukee
PNC Bank
Potawatomi Bingo Casino
Professional Dimensions
RBC Wealth Management
Reel Wave Media
Robert W Baird & Co.
Rockwell Automation
Roundy’s Supermarkets
Safe Alternatives for Youth
Safe & Sound
SEEK Careers and Staffing
Serenitees
St. John Vianney Parish
St. Robert’s Parish
Silver Spring Neighborhood Center
SmartWave Technologies
Social Development Commission
Southside Organizing Committee
Stamm Technologies
Standard Process
Staples
Step Ahead Tutors
Technitrol, Inc.
Time Warner Cable
Titus Group
Today’s TMJ4
Travelers Insurance
Tri City National Bank
United Migrant Opportunity Services
United Neighborhood Centers of Milwaukee
United Way of Greater Milwaukee
University of Wisconsin—Extension
University of Wisconsin—Milwaukee
University of Wisconsin—Oshkosh
University of Wisconsin—LaCrosse
Urban Ecology Center
US Bank
US Department of Education
USA Football
May Vora Jewelry
Wagner Garden Mart
Walgreen’s
Walker’s Point Center for the Arts
Walnut Way
WE Energies
Wellpoint
Whyte Hirschboeck Dudek
Wild Space
Wisconsin Conservatory of Music
Wisconsin Department of Instruction
Wisconsin Literacy
Wisconsin Technical College System
Wisconsin Youth Leadership Academy
WJMR-FM 98.3
Woman’s Club of Wisconsin
YWCA
Young Milwaukee Charitable Organization
Ziegler Kettle Moraine Jazz Festival
Zilber Family Foundation
Zoological Society of Milwaukee
88.9 Radio Milwaukee

JOURNEY HOUSE LEARNING & LEADERSHIP CENTERS

JOURNEY HOUSE CENTER FOR FAMILY LEARNING AND YOUTH ATHLETICS

2110 West Scott Street
Milwaukee, WI 53204
Ph: 414-647-0548
Fax: 414-647-0266

JOURNEY HOUSE PACKERS FIELD MILWAUKEE COUNTY MITCHELL PARK

(eastern side)
South 22nd Street and West Pierce Street
Milwaukee, WI 53204

Community Learning Centers (CLC):

ALBERT E. KAGEL K-5 ELEMENTARY SCHOOL

1210 West Mineral Street
Milwaukee, WI 53204
Ph: 414-902-7437
Fax: 414-902-7415

BAY VIEW HIGH SCHOOL CLC

2751 S. Lenox Street
Milwaukee, WI 53207
Ph: 414-294-2535
Fax: 414-294-2415

HUMBOLDT PARK K-8 SCHOOL CLC

3230 S. Adams Avenue
Milwaukee, WI 53207
Ph: 414-294-1725
Fax: 414-294-1715

H.W. LONGFELLOW K-8 SCHOOL CLC

1021 S. 21st Street
Milwaukee, WI 53204
Ph: 414-902-9807
Fax: 414-902-9815

SOUTH DIVISION HIGH SCHOOL CLC

1515 West Lapham Boulevard
Milwaukee, WI 53204
Ph: 414-902-8300
Fax: 414-902-8315

JOURNEY HOUSE BOARD OF DIRECTORS

Chris Calvelli, *Chairman*
Baird
Daniel Kolb
RBC Wealth Management

Eugene Manzanet, *President*
PNC Bank
Catherine La Fleur
La Fleur Law Office, S.C.

Mike Kleber, *Vice-President*
Zilber Ltd/Zilber Property Group
John Miceli
Eppstein Uhen Architects, Inc.

Patrick Sheahan, *Treasurer*
OnCourse Learning
Jim Miller
BMO Harris Bank

Carmen Ventura, *Secretary*
Community Volunteer
Brian Nelson
I.C.M. Corporation

Barbara Klein, *Retired Past Chairman*
Community Volunteer
Theresa Plautz-Blazei
Actuant

Ray Arndt
Paragon Development Systems
Bill Sandoval
Club Latino

Francis Brzezinski
Interstate Partners LLC
Timothy Terry
Green Bay Packers

Michael Burke, Ph.D.
Milwaukee Area Technical College
Tonette Walker
First Lady of Wisconsin

Kathleen Clark
Northwestern Mutual
Carl Zaar
Marcus Corporation

Jean-Marie Crahan
Gonzalez Saggio & Harlan

BOARD MEMBERS RETIRED DURING 2013

Greg Herrle
Milliman
James Williams, Ed.D.
Milwaukee Area Technical College

Sarah Jelencic
Foley & Lardner
James Schlater
Secure Fire and Safety, LLC

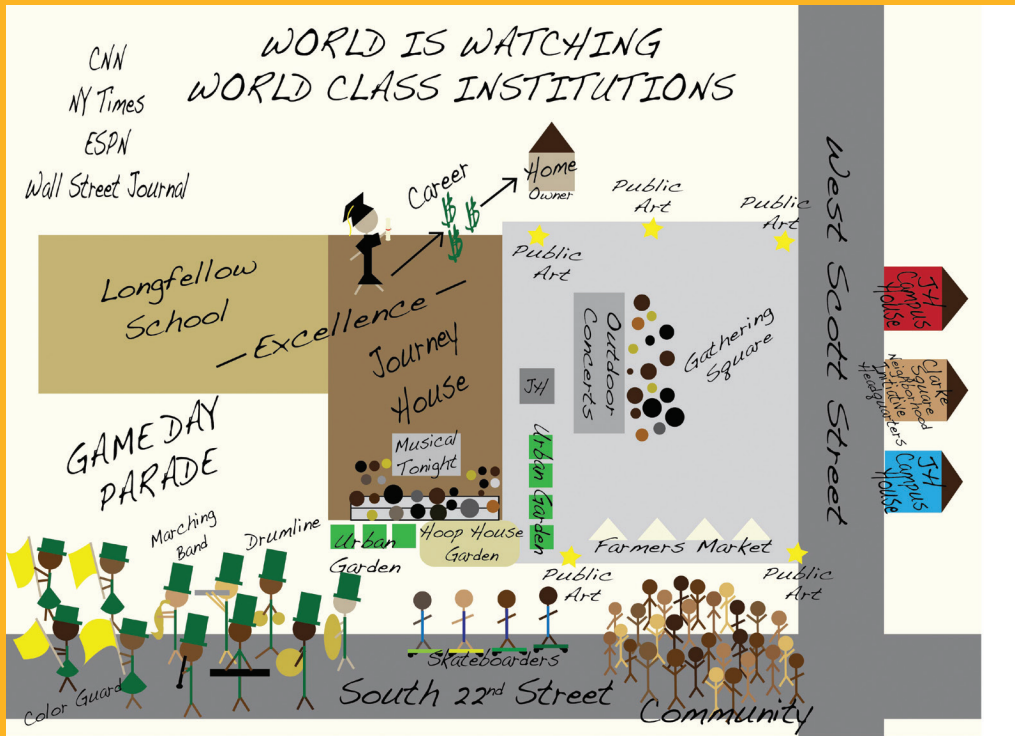
JOURNEY HOUSE CHARITABLE FOUNDATION BOARD OF DIRECTORS

James Schlater, *President*
Secure Fire & Safety, LLC
Brian Kilb, *Secretary*
Landaas & Company

Kathryn Buono, *Vice-President*
Quarles & Brady
Daniel Kolb
RBC Wealth Management

Greg Herrle, *Treasurer*
Milliman
Janet Protasiewicz
Milwaukee County District Attorney’s Office

FUTURE 2018 VISION OF OUR NEIGHBORHOOD



journeyhouse.org

Journey House Center for Family Learning and Youth Athletics • 2110 West Scott Street • Milwaukee, WI 53204
Like us on Facebook: facebook.com/journeyhouse